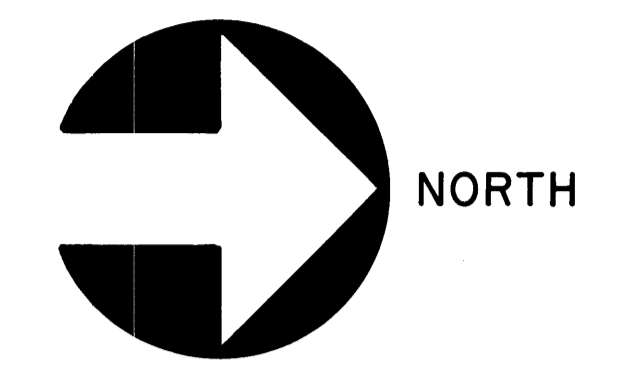
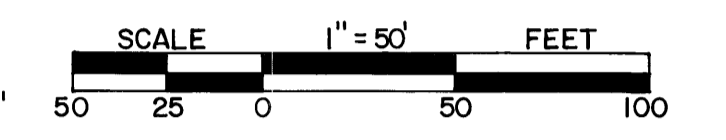


# WINDING WATERS

CLERK'S RECORDING CERTIFICATE  
 I, LOUISE V. ISAACS, CLERK OF THE CIRCUIT COURT OF MARTIN COUNTY, FLORIDA  
 HEREBY CERTIFY THAT THIS PLAT WAS FILED FOR RECORD IN PLAT BOOK 9, PAGE 11  
 MARTIN COUNTY, FLORIDA, PUBLIC RECORDS, THIS \_\_\_\_\_ DAY OF \_\_\_\_\_ 1982  
 LOUISE V. ISAACS, CLERK  
 CIRCUIT COURT  
 MARTIN COUNTY, FLORIDA  
 BY: \_\_\_\_\_ DEPUTY CLERK (CIRCUIT COURT SEAL)



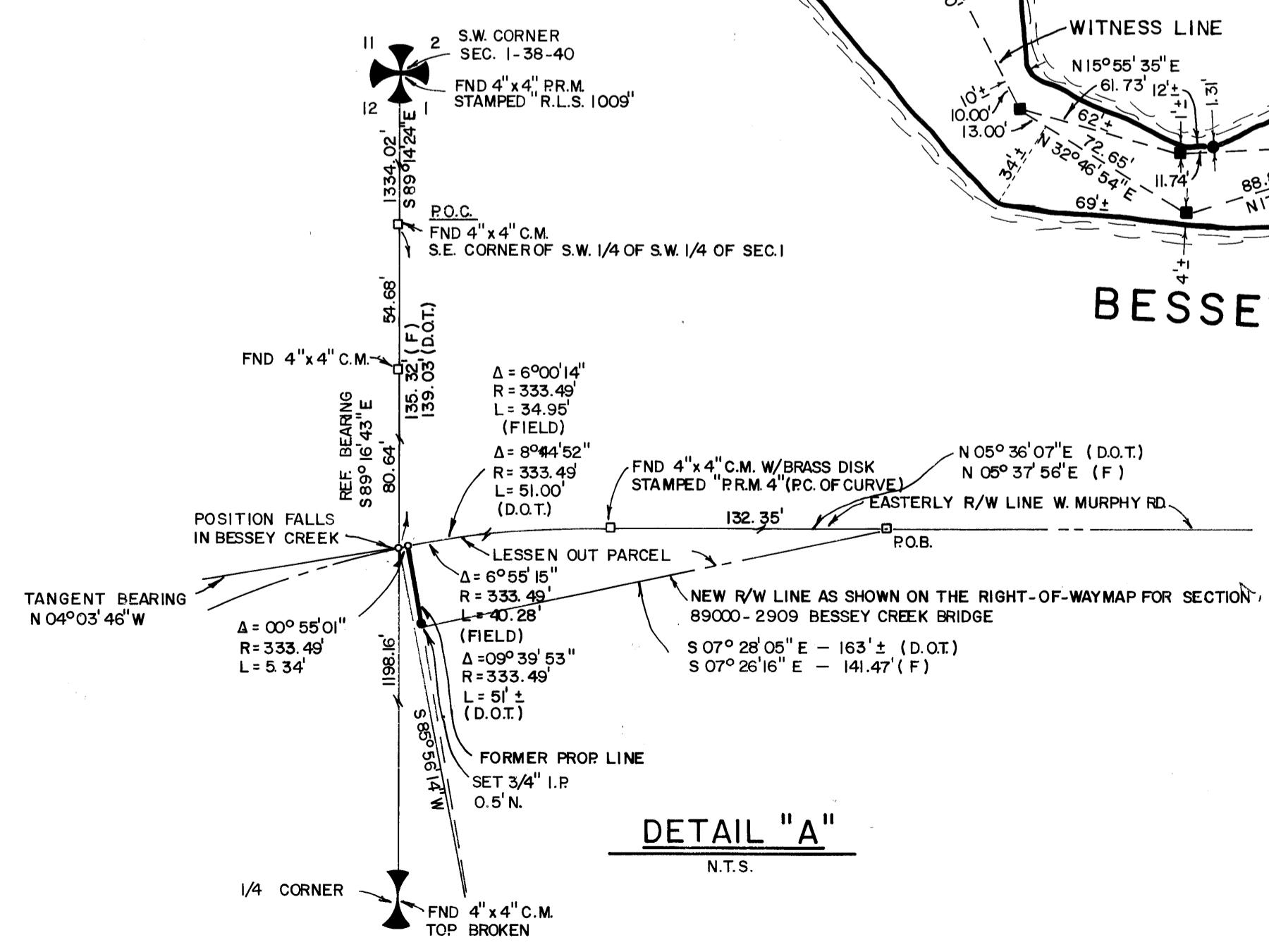
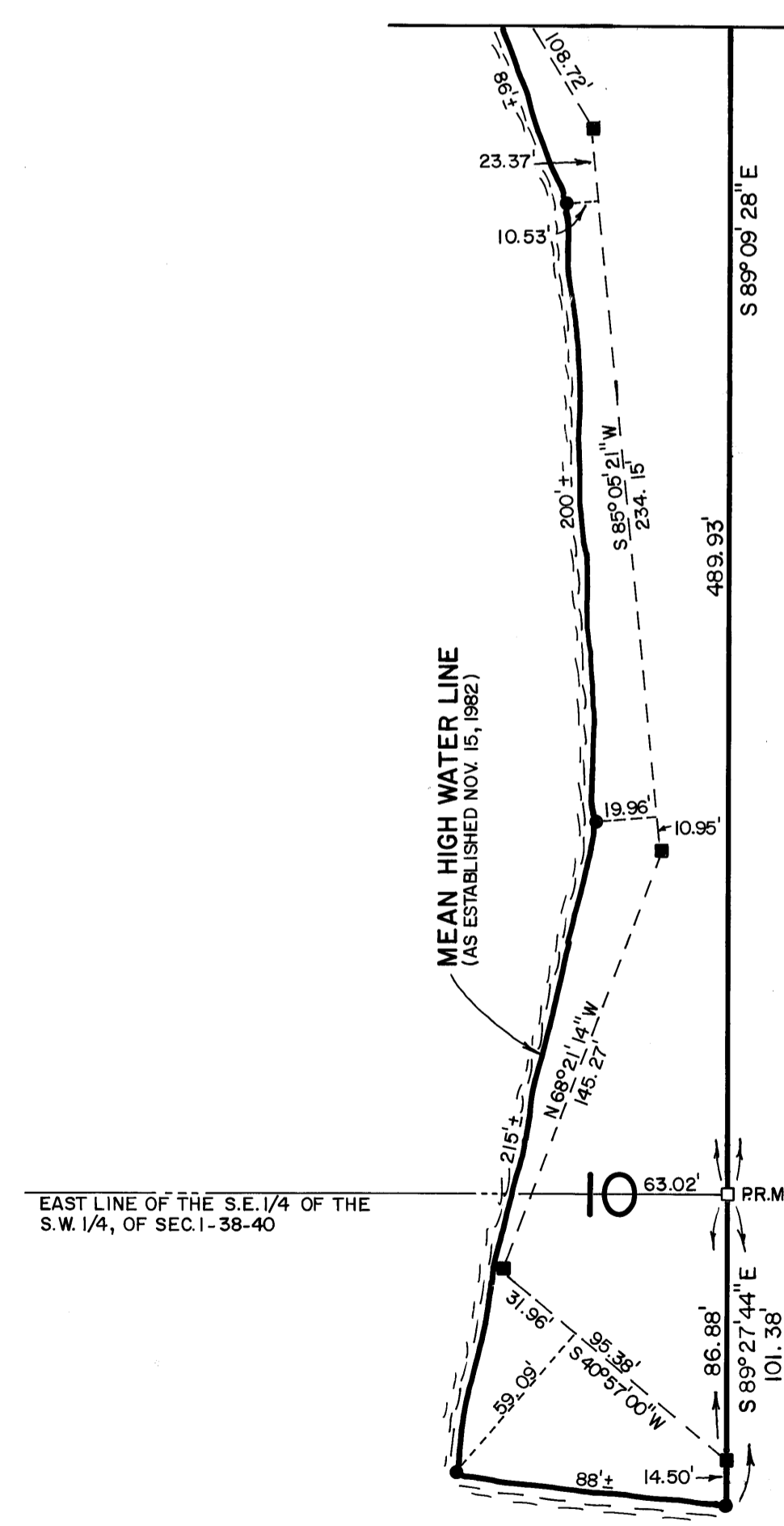
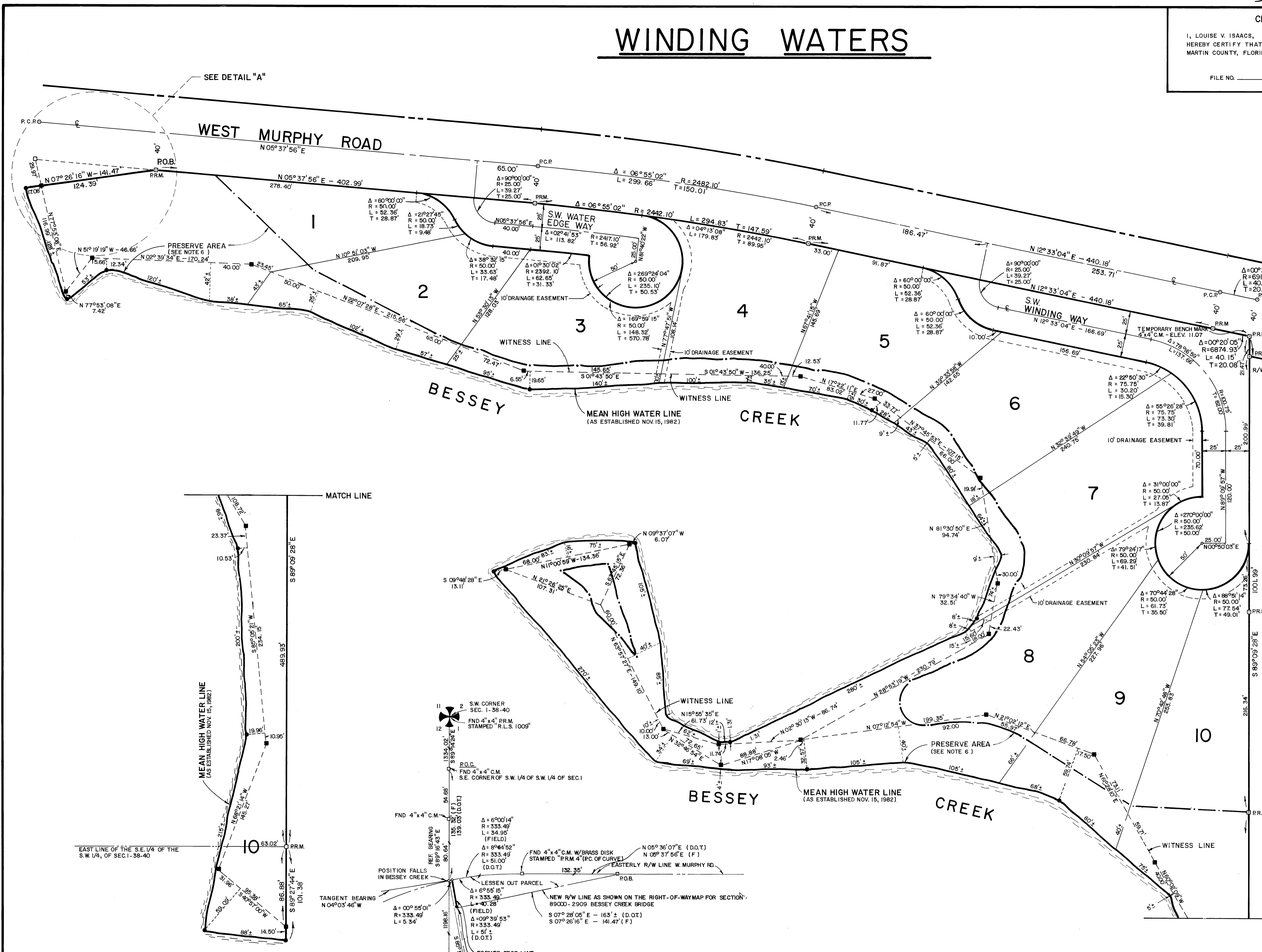
OCTOBER 1982



- LEGEND
- = SET 4"x4" CONCRETE MONUMENT ALONG WITNESS LINE
  - = P.R.M. (PERMANENT REFERENCE MONUMENT)
  - = P.C.P. (PERMANENT CONTROL POINT)
  - = SET 3/4" I.P. ALONG MEAN HIGH WATER LINE OF BESSEY CREEK

- NOTES:
- 1) ACCESS TO LOT 5 WILL BE LIMITED TO S.W. WINDING WAY
  - 2) ACCESS TO LOTS 1 AND 4 WILL BE LIMITED TO S.W. WATER EDGE WAY
  - 3) NO LOT SPLITS EXCEPT TO CREATE LARGER LOTS
  - 4) ALL SEPTIC TANKS RESTRICTED TO FRONT YARDS
  - 5) ALL STRUCTURES PLACED BELOW THE 7 FOOT CONTOUR LINE WILL BE ON PILES.
  - 6) PRESERVATION AREA NOT TO BE DISTURBED WITHOUT THE PERMISSION OF THE MARTIN COUNTY BOARD OF COUNTY COMMISSIONERS, EXCEPT A COMMISSION ACTION SHALL NOT BE NECESSARY FOR WAIVER PROVIDED BY SECTION 4-3 (B) OF THE MARTIN COUNTY COMPREHENSIVE PLAN.

- SURVEYORS NOTES:
- 1) ALL BEARINGS SHOWN HEREON ARE BASED UPON THE SOUTH LINE OF THE SOUTHEAST 1/4 OF THE SOUTHWEST 1/4 OF SECTION 1, TOWNSHIP 38, SOUTH RANGE 40 EAST, MARTIN COUNTY, FLORIDA AS SHOWN ON THE RIGHT-OF-WAY MAP OF BESSEY CREEK BRIDGE, D.O.T. SEC. NO. 89000-2909. REF BEARING: S 89° 16' 43" E
  - 2) MEAN HIGH WATER LINE AS SHOWN HEREON WAS ESTABLISHED AS DESCRIBED UNDER CHAPTER 177, PART II FLORIDA STATE STATUTES AND APPROVED BY THE D.N.R. ON NOVEMBER 15, 1982
  - 3) ALL ELEVATIONS SHOWN HEREON REFER TO F.C.C. 2129, ARMY CORP OF ENGINEERS 1961, ELEVATION 15.99 M.S.L.
  - 4) TEMPORARY BENCH MARK NORTHWEST CORNER LOT 3, TOP OF 4" x 4" C.M. ELEV. 11.07 M.S.L.



MATHERS & ASSOCIATES  
 ENGINEERS - SURVEYORS  
 DESIGNERS - LAND PLANNERS - CONSULTANTS  
 295 FLORIDA STREET STUART, FLORIDA  
 (305) 287-0525

SHEET NO.  
 2  
 OF  
 2